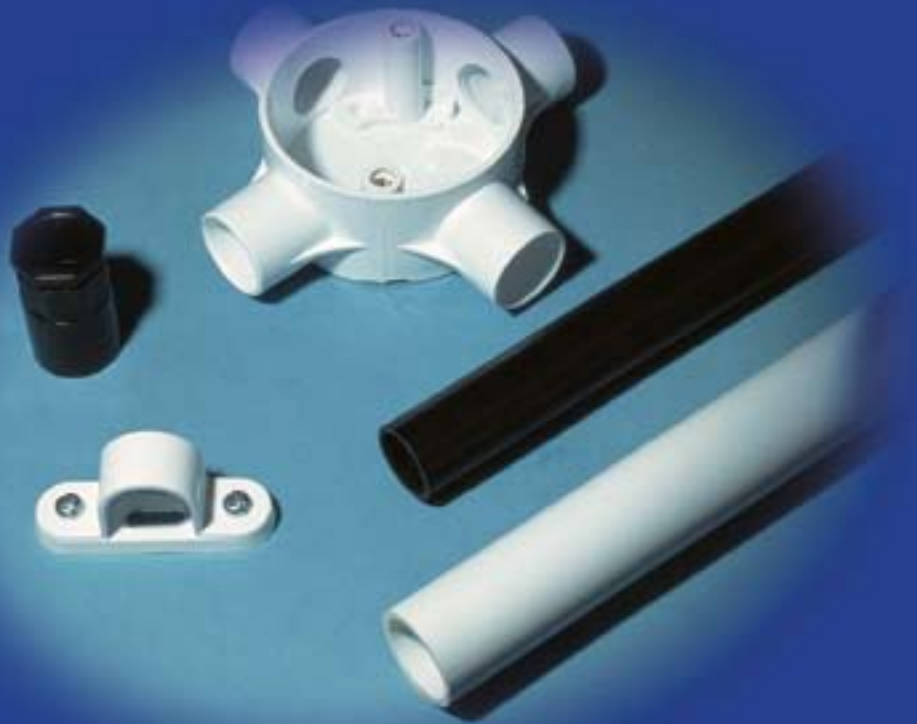


CONDUIT SYSTEMS

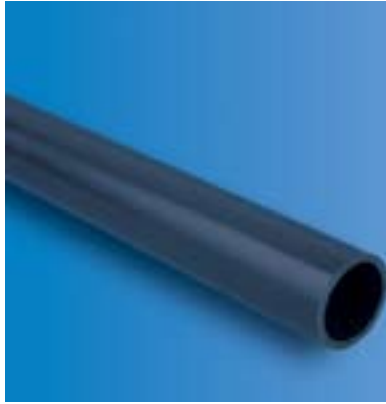
Supplied by Digital Stout Innovation & Trading FZE





Conduit System

DECODUCT Conduits are manufactured from super high impact uPVC compound suitable to withstand harsh environments. Conduits can be bent with the use of a bending spring.



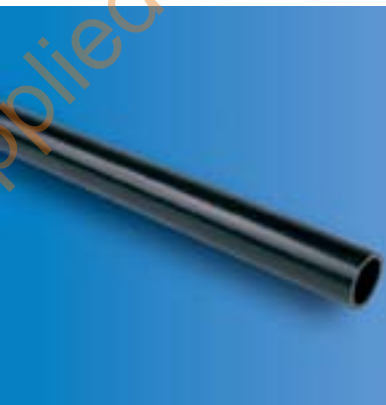
HEAVY GRADE ROUND CONDUIT-1250N COMPRESSION FORCE

Item code	Nominal Size (O.D.) mm	Minimum Inside Diameter mm	Standard packs		Bulk packs
			Pcs	Mtrs	Pcs
DCV 1	16	12.4	50	145	-
DCV 2	20	16.0	20	58	5000
DCV 3	25	20.7	20	58	3200
DCV 4	32	26.5	10	29	1800
DCV 5	38	32.5	10	29	1300
DCV 6	50	43.0	10	29	720



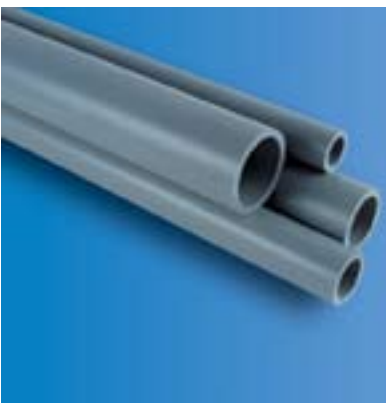
MEDIUM GRADE ROUND CONDUIT-750N COMPRESSION FORCE

Item code	Nominal Size (O.D.) mm	Minimum Inside Diameter mm	Standard packs		Bulk packs
			Pcs	Mtrs	Pcs
DCH 1	16	12.8	50	145	-
DCH 2	20	16.5	20	58	5000
DCH 3	25	20.9	20	58	3200
DCH 4	32	27.3	10	29	1800
DCH 5	38	33.1	10	29	1300
DCH 6	50	44.4	10	29	720



LIGHT GRADE ROUND CONDUIT-320N COMPRESSION FORCE

Item code	Nominal Size (O.D.) mm	Minimum Inside Diameter mm	Standard packs		Bulk packs
			Pcs	Mtrs	Pcs
DCL 1	16	13.4	50	145	-
DCL 2	20	17.2	20	58	5000
DCL 3	25	21.7	20	58	3200
DCL 4	32	28.5	10	29	1800
DCL 5	38	34.5	10	29	1300
DCL 6	50	45.6	10	29	720

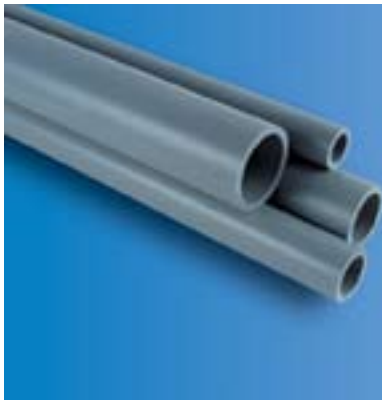


US SCHEDULE 40 CONDUIT

Item code	Trade / Metric Sizes Inch/mm	Dimensions (mm) Maximum Outer Diameter	Schedule - 40 Minimum Wall Thickness	Standard Packs	
				Pieces	Metres
DCS4 - 1	1/2" / 16 mm	21.54	2.77	20	60
DCS4 - 2	3/4" / 21 mm	26.92	2.87	10	30
DCS4 - 3	1" / 27 mm	33.66	3.38	10	30
DCS4 - 4	1 1/4" / 35 mm	42.47	3.56	5	15
DCS4 - 5	1 1/2" / 41 mm	48.56	3.68	5	15
DCS4 - 6	2" / 53 mm	60.63	3.91	1	3
DCS4 - 7	3" / 78 mm	89.28	5.49	1	3
DCS4 - 8	4" / 103 mm	115.57	6.02	1	3
DCS4 - 9	6" / 155 mm	169.54	7.11	1	3

• Standard Length of 3 metres in grey colour. Other colours and lengths can be produced upon request.

Conduit System



US SCHEDULE 80 CONDUIT

Item code	Trade / Metric Sizes Inch/mm	Dimensions (mm) Maximum Outer Diameter	Schedule - 80 Minimum Wall Thickness	Standard Packs	
				Pieces	Metres
DCS4 - 1	1/2" / 16 mm	21.54	3.73	20	60
DCS4 - 2	3/4" / 21 mm	26.92	3.91	10	30
DCS4 - 3	1" / 27 mm	33.66	4.55	10	30
DCS4 - 4	1 1/4" / 35 mm	42.47	4.85	5	15
DCS4 - 5	1 1/2" / 41 mm	48.56	5.08	5	15
DCS4 - 6	2" / 53 mm	60.63	5.54	1	3
DCS4 - 7	3" / 78 mm	89.28	7.62	1	3
DCS4 - 8	4" / 103 mm	115.57	8.56	1	3
DCS4 - 9	6" / 155 mm	169.54	10.97	1	3

• Standard Length of 3 metres in grey colour. Other colours and lengths can be produced upon request.



OVAL CONDUIT

Item code	Size (mm)	Standard packs		Bulk packs
		Pcs	Mtrs	
DOV 1	16 x 0.8	50	150	-
DOV 2	22 x 0.8	50	150	-
DOV 3	28 x 1.0	50	150	-



PLIABLE CONDUIT-CORRUGATED

Item code	Nominal Size (O.D.) (mm)	Minimum Inside Diameter (mm)	Standard packs Mtrs/Roll	Bulk packs
HEAVY GAUGE				8 Rolls
DPH 2	20	15.4	50	8 Rolls
DPH 3	25	20.4	50	8 Rolls
LIGHT GAUGE				8 Rolls
DPL 2	20	15.6	50	8 Rolls
DPL 3	25	20.6	50	8 Rolls

• Available in black, white or grey • Standard Length 50 metres



RECTANGULAR CHANNELS

Item code	Size (mm)	Standard packs		Bulk packs
		Pcs	Mtrs	
DQC 1	13 x 8	50	100	-
DQC 2	25 x 8	50	100	-
DQC 3	38 x 9.5	50	100	-

• Available in black, white or grey
• Standard Length 2 metres

Options

- Decoduct rigid conduit is available in black or white. Please state colour preference
- Decoduct rigid conduit is supplied in standard lengths of 2.9 metres. Alternative lengths can be supplied to order
- Rigid conduits can be offered with belled ends for socket joining. Please specify when this option is required.



Round Conduit Fittings

DECODUCT Conduit fittings are manufactured from super high impact uPVC compound suitable to withstand harsh environments

STRAIGHT COUPLERS



Item code	Size (mm)	Standard packs	Bulk packs
DNC 2	20	100	2600
DNC 3	25	50	1300
DNC 4	32	50	800
DNC 5	38	25	400
DNC 6	50	20	240

EXPANSION COUPLERS



Item code	Size (mm)	Standard packs	Bulk packs
DEC 2	20	50	800
DEC 3	25	25	625
DEC 4	32	10	260
DEC 5	38	10	250
DEC 6	50	10	120

NORMAL BENDS-SLIP TYPE



Item code	Size (mm)	Standard packs	Bulk packs
DLB 2	20	20	320
DLB 3	25	10	160
DLB 4	32	5	60
DLB 5	38	2	60
DLB 6	50	2	28

NORMAL BENDS-HEAVY GAUGE



Item code	Size (mm)	Standard packs	Bulk packs
DHB 2	20	20	320
DHB 3	25	10	160
DHB 4	32	5	60
DHB 5	38	2	60
DHB 6	50	2	30

Options : Available in black or white

Round Conduit Fittings



INSPECTION ELBOWS

Item code	Size (mm)	Standard packs	Bulk packs
DIE 2	20	25	650
DIE 3	25	25	400



INSPECTION BENDS

Item code	Size (mm)	Standard packs	Bulk packs
DIB 2	20	25	400
DIB 3	25	20	320



INSPECTION TEES

Item code	Size (mm)	Standard packs	Bulk packs
DIT 2	20	20	520
DIT 3	25	20	320



STRAP SADDLES

Item code	Size (mm)	Standard packs	Bulk packs
DSS 2	20	100	4000
DSS 3	25	100	4000
DSS 4	32	100	2600
DSS 5	38	50	2000
DSS 6	50	50	1300

Options : Available in black or white



Round Conduit Fittings



SPACER BAR SADDLES

Item code	Size (mm)	Standard packs	Bulk packs
DSB 2	20	100	2600
DSB 3	25	50	2000
DSB 4	32	50	1300
DSB 5	38	25	1000
DSB 6	50	25	650



ROUND SPRING CLIPS

Item code	Size (mm)	Standard packs	Bulk packs
DRC2	20	200	5200
DRC3	25	100	4000



FEMALE ADAPTORS

Item code	Size (mm)	Standard packs	Bulk packs
DFA2	20	100	2600
DFA3	25	50	1300
DFA4	32	25	650
DFA5	38	20	520
DFA6	50	20	320



MALE ADAPTORS

Item code	Size (mm)	Standard packs	Bulk packs
DMA2	20	100	2600
DMA3	25	50	1300

Options : Available in black or white

Round Conduit Fittings



MALE THREADED BUSH

Item code	Size (mm)	Standard packs	Bulk packs
DMB2	20	200	8000
DMB3	25	100	4000
DMB4	32	100	2600
DMB5	38	50	2000
DMB6	50	25	1000



FEMALE THREADED LOCKRINGS

Item code	Size (mm)	Standard packs	Bulk packs
DFB 2	20	200	8000
DFB 3	25	200	8000



REDUCERS

Item code	Size (mm)	Standard packs	Bulk packs
DRD 2	25/20	100	2600



PLIABLE CONDUIT ADAPTORS

Item code	Size (mm)	Standard packs	Bulk packs
DPA2	20	50	2000
DPA3	25	100	1200

Options : Available in black or white