

BURN®



METALLIC CABLE PROTECTION SYSTEM

HOT DIPPED GALVANISED CONDUITS

METALLIC CONDUITS & FITTINGS

ADAPTABLE BOXES

FLEXIBLE CONDUITS

SWITCH & SOCKET BOXES

BRITISH STANDARD



Registration Certificate

*This is to certify that
the Management Systems of*

ROYAL STEEL INDUSTRY CO., LTD.

*have been assessed by AJA Registrars and registered
against the requirements of*

ISO 9001:2008

Certificate No: **AJAP01408**
Re-Registration Date: **26.11.14**

Date of Original Registration: **24.06.99**
Date of Re-Registration: **26.11.11**



Jonathan Taylor-Dunn
Joint UK/Japanese Registrars



This certificate is issued in respect of the activities & scope of registration described in the associated Registration Schedule.
This certificate has been issued by AJA Registrars Limited, Unit 6, Clonkeen Court, Clonkeen Road, Sarsfield Park, Sarsfield, Co. Dublin, Ireland. Tel: 00353 1 852 1000

Test Report



Report No: **2867050751** This Report consists of **6** pages

Client: **Royal Steel Industry Co Ltd
1/115 Moo 2
Amphoe Muang
Samut Sakorn
74000
Thailand**

Authority & date: **BSI Product Services Quotation Acceptance Form No BSI 0000080817
Dated 22 May 2007**

Items tested: **Metallic Conduit Fittings**

Specification: **BS EN 61386-21:2004 Clauses 7.1, 8.1, 8.2, 9.1, 10.3, 10.7, 10.8, 11.2,
14.1.1 and 14.2.2.3
Independent Test**

Results: **See Summary of Results on Page 2**

Prepared by: **G R Essam** *[Signature]* **Principal Engineer**

Authorized by: **D Mackie** *[Signature]* **Senior Engineer**

Issue Date: **12 September 2007**

Conditions of issue: **This Test Report is issued subject to the conditions stated in current issue of PS002 'General conditions relating to acceptance of testing'. The results contained herein apply only to the particular samples tested and to the specific tests carried out, as detailed in this Test Report. The issuing of this Test Report does not indicate any measure of Approval, Certification, Supervision, Control or Surveillance by BSI of any product. No extract, abridgement or obstruction from a Test Report may be published or used to advertise a product without the written consent of the Managing Director, BSI Product Services, who reserves the absolute right to agree or reject all or any of the details of any terms or publicity for which consent may be sought.**

BSI Product Services, Maylands Avenue, Hemel Hempstead, Hertfordshire HP2 4GQ, Telephone: 08452 750000

Test Report



Report No: **2867080985** This Report consists of **6** pages

Client: **Royal Steel Industry Co Ltd
1/115 Moo 2
Amphoe Muang
Samut Sakorn
74000
Thailand**

Authority & date: **Quotation acceptance from client reference BSI 0000095335
Dated 6 August 2007**

Items tested: **Galvanised Steel Conduits**

Specification: **BS EN 61386-21:2004 Clauses 8.1, 9.1, 10.2, 10.3, 10.4, 10.7, 11.5 and
14.2.2
Independent Test**

Results: **See Summary of Results on Page 2**

Prepared by: **D Sheridan-Walls** *[Signature]* **Test Engineer**

Authorized by: **G R Essam** *[Signature]* **Principal Engineer**

Issue Date: **18 September 2007**

Conditions of issue: **This Test Report is issued subject to the conditions stated in current issue of PS002 'General conditions relating to acceptance of testing'. The results contained herein apply only to the particular samples tested and to the specific tests carried out, as detailed in this Test Report. The issuing of this Test Report does not indicate any measure of Approval, Certification, Supervision, Control or Surveillance by BSI of any product. No extract, abridgement or obstruction from a Test Report may be published or used to advertise a product without the written consent of the Managing Director, BSI Product Services, who reserves the absolute right to agree or reject all or any of the details of any terms or publicity for which consent may be sought.**

BSI Product Services, Maylands Avenue, Hemel Hempstead, Hertfordshire HP2 4GQ, Telephone: 08452 750000

CONTENTS

Steel Conduits **1-2**

- BS 4568 PART I : 1970
- BS EN 50086-1 : 1994
- BS EN 50086-2 : 1996

Fittings & Accessories **3-8**

- | | | |
|----------------|---|---|
| BOXES | - Circular, Small | - Circular, Large |
| | - Circular, Small (Special Deep) | - Looping In |
| RINGS | - Circular Box Extension Ring | |
| COVERS | - Ball & Socket, Earthed | - For Circular Box Cover - Small |
| | - For Circular Box Cover - Large | - Hook |
| | - Dome Lid | |
| RUBBER GASKETS | - For Circular Box - Small | |
| | - For Circular Box - Large | |
| COUPLINGS | - Coupling | - Short Nipple |
| | - Long Nipple - 300mm Long | - Flange Coupling With Lead Washer & Long Male Bush |
| BENDS | - Inspection Elbow | - Inspection Bend |
| | - Inspection Tee | - 90° Normal Bend, Internal Thread |
| BUSHES | - Male Bush - Short | - Male Bush - Long |
| | - Female Bush | |
| PLUGS | - Stopping Plug - Hexagonal Head - Stopping Plug - Slotted Head | |
| REDUCERS | - Reducer | |
| LOCKNUT | - Hexagonal Locknut - Light | - Hexagonal Locknut - Heavy |
| | - Hexagonal Locknut - Brass | - Locking Ring |
| SADDLES | - Crampet | - Half Saddle |
| | - Plain Saddle | - Distance Saddle |
| | - Bar Saddle | |
| ADAPTOR | - Male Adaptor | - Female Adaptor |
| LUG | - Cable Lug | |

Adaptable Boxes **9**

- ADAPTABLE BOXES

Flexible Conduits **10**

- FLEXIBLE CONDUITS

Switch & Socket Boxes **11**

- SWITCH & SOCKET BOXES

Supplied by Digital Stout Innovation & Trading PTE

BURN A Global Brand Epitomizing Quality

THE QUALITY

BURN range of conduits and fittings listed in this brochure is manufactured by Royal Steel Industry Co., Ltd. under a certified BS EN ISO 9001 system. ISO 9001 system integrates a complete set of working practices encompassing disciplines and procedures that are carefully adhered to, from raw material inspection right through to the final dispatch.

To ensure similar quality products from our appointed suppliers, rigorous inspection procedures and controls are also applied.

Hence, all BURN products satisfy a uniform standard of quality and reliability.

STANDARDS

BURN products are manufactured in accordance with the following British Standards.

STEEL CONDUITS COMPLY WITH

- BS 4568 Part 1 : 1970, BS EN 61386 - 21 : 2004
- BS EN 50086-1 : 1994
- BS EN 50086-2 : 1996

FITTINGS & ACCESSORIES COMPLY WITH

- BS 4568 Part 2 : 1970, BS EN 61386 - 21 : 2004
- BS EN 50086-1 : 1994
- BS EN 50086-2 : 1996

FLEXIBLE CONDUIT MANUFACTURED TO

- BS 731 Part 1, BS EN 61386 - 23 : 2004

SWITCH & SOCKET BOXES MANUFACTURED TO

- BS 4662

Also available :

- a) Rigid Steel Conduit To ANSI C80.1-1983 (UL E306029)
- b) Intermediate Metal Conduit To ANSI C80.6-1983 (UL E211593)
- c) Electrical Metallic Tubing To ANSI C80.3-1983 (UL E306028)

CONDUIT PRODUCT FEATURES

- Highest grade of steel for mechanical strength.
- Well-controlled internal beads essential for wire pulling and resistant to snagging.
- Threading in compliance to BS specification. The conduits are supplied with a coupling screwed on one end and a protective colour coded cap at the other end to prevent damage.
- Rigorous quality control procedures to ensure process and product consistency.

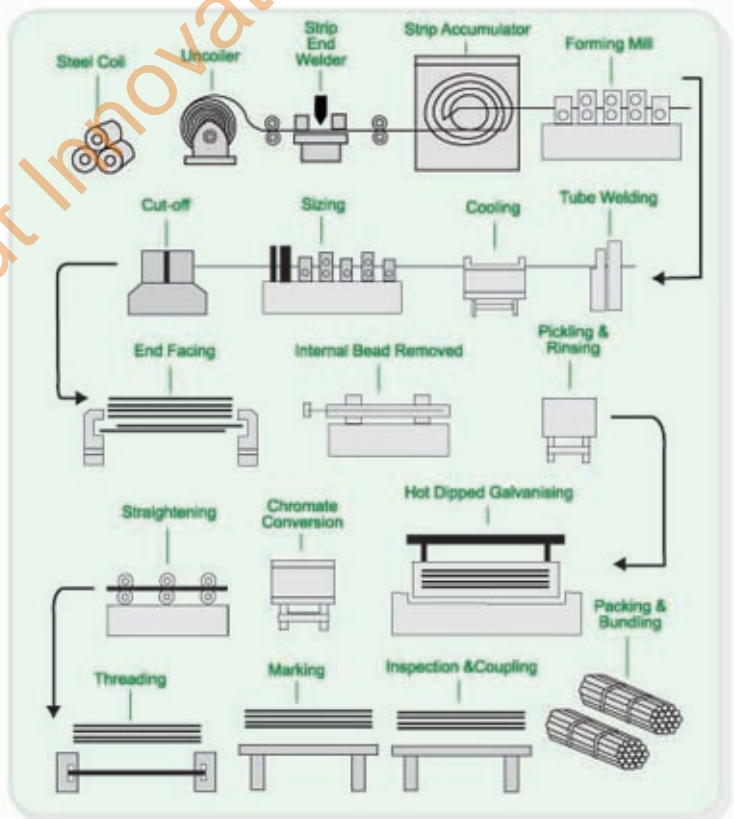
MAXIMUM CORROSION PREVENTION

All BURN conduits are hot dipped galvanised with more than 60 microns of zinc coating. To protect the zinc coating from white rust, the surface is treated with chromate solution. BURN conduits are of the highest grade able to withstand extreme conditions. They are ideal for heavy industries like oil and gas, petrochemical and infrastructure projects like airports, underground transport, seaports, commercial and residential buildings.

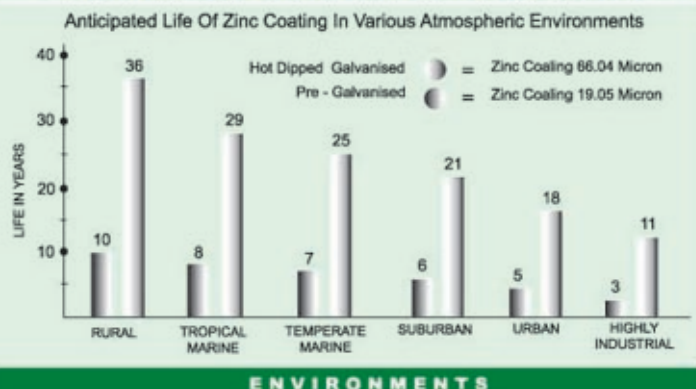
THE SERVICE

BURN is a global brand with dedicated and well trained sales personnel in technical knowledge. We are geared to provide sound product solutions to our clients worldwide. Together with our comprehensive Supply Chain Management, the group provides efficient freight shipping scheduling globally.

CONDUIT MANUFACTURING PROCESS



COMPARISON OF HOT DIPPED GALVANISED AND PRE-GALVANISED COATING IN VARIOUS ENVIRONMENTS



NOTE : REFERENCE

1. Pre-Galvanised Zinc (ASTM A525 Coating Designation G90)
2. Hot Dipped Galvanised After Fabrication ASTM A123 (Formerly A386)

BS 4568 Part 1 : 1970, BS EN 50086-1 : 1994, BS EN 61386 - 21 : 2004

HOT DIPPED GALVANISED INSIDE AND OUTSIDE - CLASS 4

Item Code	Outside Diameter (mm)	Wall Thickness (mm)	Minimum Weight Per Length With Coupling (kgs)
C-BN-B020H	20	1.6	2.90
C-BN-B025H	25	1.6	3.80
C-BN-B032H	32	1.6	5.50

- Standard Length : 3.75 metre
- Threaded both ends. One end fitted with coupling and the other protected by plastic end cap

CABLE CAPACITIES OF CONDUIT

The following tables provide calculation of the number of single-core p.v.c. insulated cables which can be located in various sizes of conduit. The tables deal with two particular cases.

- i) Single-core p.v.c. insulated cables in straight runs not exceeding 3 metres in length.
- ii) Single-core p.v.c. insulated cables in straight runs exceeding 3 metres in length or in runs of any length with bends or sets.

Straight Runs Not Exceeding 3 Metres In Length

Refer to Table 1 to obtain the cable factor for each type of cable being used. Sum all the cable factors and compare with the conduit factors given in Table 2.

The conduit size which will accommodate the cables are those with a conduit factors equal to or greater than the sum of the cable factors.

Straight Runs Exceeding 3 Metres In Length Or Runs Of Any Length Incorporating Bends Or Sets

Refer to Table 3 to obtain the cable factor for each type of cable being used. Sum all the cable factors and compare with conduit factors given in Table 4 for the relevant length of run and the number of bends and sets in that run.

The conduit sizes which will accommodate the cables are those with a conduit factors equal to or greater than the sum of the cable factors.

Type of conductor	Conductor cross-sectional area (mm ²)	Factor
Solid	1	22
	1.5	27
	2.5	39
Stranded	1.5	31
	2.5	43
	4	58
	6	88
	10	146

Table 1 Cable factors for short straight runs
These tables are based on the 16th edition of the I.E.E. Wiring Regulations Appendix 12.

Conduit Ø (mm)	Factor
16	290
20	460
25	800
32	1400

Table 2 Conduit factors for short straight runs

Type of conductor	Conductor cross-sectional area (mm ²)	Factor
Solid or Stranded	1	16
	1.5	22
	2.5	30
	4	43
	6	58
	10	105

Table 3 Cable factors for long straight runs, or runs incorporating bends.

SPACING OF SUPPORTS FOR CONDUITS

The following table provide guidance on the support spacing for conduits.

- This table is based on the 16th edition of the I.E.E. Wiring Regulations Appendix II.
- These tables are for guidance only and account needs to be taken of future Wiring needs.

Nominal size of conduit (mm)	Maximum distance between supports	
	Horizontal runs (m)	Vertical runs (m)
16	0.75	1.0
17-25	1.75	2.0
26-40	2.0	2.25
Over 40	2.25	2.5

Length of run Metres	CONDUIT DIAMETER (MM)																															
	16				20				25				32				16				20				25				32			
	Straight				One bends				Two bends				Three bends				Four bends															
1	Cover by Tables I and 2				188	303	543	947	177	286	514	900	158	256	463	818	130	213	388	692	130	213	388	692	111	182	333	600				
1.5	Cover by Tables I and 2				182	294	528	923	167	270	487	857	143	233	422	750	111	182	333	600	86	141	260	474	86	141	260	474				
2	Cover by Tables I and 2				177	286	514	900	158	256	463	818	130	213	388	692	111	182	333	600	86	141	260	474	86	141	260	474				
2.5	Cover by Tables I and 2				171	278	500	878	150	244	442	783	120	196	358	643	86	141	260	474	86	141	260	474	86	141	260	474				
3	Cover by Tables I and 2				167	270	487	857	143	233	422	750	111	182	333	600	86	141	260	474	86	141	260	474	86	141	260	474				
3.5	179	290	521	911	162	263	475	837	136	222	404	720	103	169	311	563	86	141	260	474	86	141	260	474	86	141	260	474				
4	177	286	514	900	158	256	463	818	130	213	388	692	97	159	292	529	86	141	260	474	86	141	260	474	86	141	260	474				
4.5	174	282	507	889	154	250	452	800	125	204	373	667	91	149	275	500	86	141	260	474	86	141	260	474	86	141	260	474				
5	171	278	500	878	150	244	442	783	120	196	358	643	86	141	260	474	86	141	260	474	86	141	260	474	86	141	260	474				
6	167	270	487	857	143	233	422	750	111	182	333	600	86	141	260	474	86	141	260	474	86	141	260	474	86	141	260	474				
7	162	263	475	837	136	222	404	720	103	169	311	563	86	141	260	474	86	141	260	474	86	141	260	474	86	141	260	474				
8	158	256	463	818	130	213	388	692	97	159	292	529	86	141	260	474	86	141	260	474	86	141	260	474	86	141	260	474				
9	154	250	452	800	125	204	373	667	91	149	275	500	86	141	260	474	86	141	260	474	86	141	260	474	86	141	260	474				
10	150	244	442	783	120	196	358	643	86	141	260	474	86	141	260	474	86	141	260	474	86	141	260	474	86	141	260	474				

Table 4 Conduit factors for runs incorporating bends.

BOXES-CIRCULAR, SMALL



TERMINAL

Item Code	Size (mm)	Pack Qty (pcs)
BN-L101	20	100
BN-L301	25	100

Material : Malleable Iron

Finish : Hot Dipped Galvanised

- 60.3mm Internal Diameter x 25mm deep for 20mm and 28mm deep for 25mm.

- Tapped M4 at 50.3 mm. With tapped hold in base for earthing screw.

- Supplied without covers or fixing screws unless ordered.

ANGLE

Item Code	Size (mm)	Pack Qty (pcs)
BN-L102	20	100
BN-L302	25	100



ANGLE WITH BACK OUTLET

Item Code	Size (mm)	Pack Qty (pcs)
BN-L122	20	100
BN-L322	25	100



THROUGH

Item Code	Size (mm)	Pack Qty (pcs)
BN-L103	20	100
BN-L303	25	100



THROUGH WITH BACK OUTLET

Item Code	Size (mm)	Pack Qty (pcs)
BN-L123	20	100
BN-L323	25	100

TEE

Item Code	Size (mm)	Pack Qty (pcs)
BN-L104	20	100
BN-L304	25	100



TEE WITH BACK OUTLET

Item Code	Size (mm)	Pack Qty (pcs)
BN-L124	20	100
BN-L324	25	100



INTERSECTION

Item Code	Size (mm)	Pack Qty (pcs)
BN-L105	20	100
BN-L305	25	10



INTERSECTION WITH BACK OUTLET

Item Code	Size (mm)	Pack Qty (pcs)
BN-L125	20	100
BN-L325	25	100

BACK OUTLET

Item Code	Size (mm)	Pack Qty (pcs)
BN-L120	20	100
BN-L320	25	100



BRANCH TWO WAY (U)

Item Code	Size (mm)	Pack Qty (pcs)
BN-L106	20	100
BN-L306	25	100



BRANCH THREE WAY (Y)

Item Code	Size (mm)	Pack Qty (pcs)
BN-L109	20	100
BN-L309	25	100



TWIN THROUGH WAY (H)

Item Code	Size (mm)	Pack Qty (pcs)
BN-L107	20	100
BN-L307	25	100



TERMINAL WITH BACK OUTLET

Item Code	Size (mm)	Pack Qty (pcs)
BN-L121	20	100
BN-L321	25	100



BOXES-CIRCULAR, LARGE

Material : Malleable Iron
 Finish : Hot Dipped Galvanised
 - 81mm Internal Diameter x 38mm deep
 - Tapped M4 at 71.5mm centres. With tapped hold in base for earthing screw.
 - Supplied without covers or fixing screws unless ordered.



TERMINAL

Item Code	Size (mm)	Pack Qty (pcs)
BN-L501	32	50

THROUGH

Item Code	Size (mm)	Pack Qty (pcs)
BN-L503	32	50



INTERSECTION

Item Code	Size (mm)	Pack Qty (pcs)
BN-L505	32	50

BRANCH THREE WAY (Y)

Item Code	Size (mm)	Pack Qty (pcs)
BN-L509	32	50



ANGLE

Item Code	Size (mm)	Pack Qty (pcs)
BN-L502	32	50

TEE

Item Code	Size (mm)	Pack Qty (pcs)
BN-L504	32	50



BRANCH TWO WAY (U)

Item Code	Size (mm)	Pack Qty (pcs)
BN-L506	32	50

TWIN THROUGH WAY (H)

Item Code	Size (mm)	Pack Qty (pcs)
BN-L507	32	50



BOXES-CIRCULAR, SMALL (SPECIAL DEEP)

Material : Malleable Iron
 Finish : Hot Dipped Galvanised
 - 60.3mm Internal diameter x 62mm deep
 - Tapped M4 at 50.8mm centres. With tapped hold in base for earthing screw.
 - Supplied without covers or fixing screws unless ordered.

TERMINAL

Item Code	Size (mm)	Pack Qty (pcs)
BN-H116	20	50



THROUGH

Item Code	Size (mm)	Pack Qty (pcs)
BN-H118	20	50

ANGLE

Item Code	Size (mm)	Pack Qty (pcs)
BN-H117	20	50



INTERSECTION

Item Code	Size (mm)	Pack Qty (pcs)
BN-H120	20	50



TEE

Item Code	Size (mm)	Pack Qty (pcs)
BN-H119	20	50

BOXES-LOOPING IN

Material : Malleable Iron
 Finish : Hot Dipped Galvanised



LOOPING IN BOX

Item Code	Size (mm)	Pack Qty (pcs)
BN-L110-1	for 20	120
BN-L110-2		120
BN-L110-3		120
BN-L110-4		120

RINGS



CIRCULAR BOX EXTENSION RING

Material : Malleable Iron
Finish : Hot Dipped Galvanised

Item Code	Size (mm)	Pack Qty (pcs)
BN-L111	for 20 & 25	120

Height : 38 mm



DOME LID

Material : Malleable Iron
Finish : Hot Dipped Galvanised

Item Code	Size (mm)	Pack Qty (pcs)
BN-D146	20	300
BN-D145	25	300

COVERS



BALL AND SOCKET, EARTHED

Material : Malleable Iron
Finish : Hot Dipped Galvanised

Item Code	Size (mm)	Pack Qty (pcs)
BN-D149	20	200
BN-D150	25	300

CIRCULAR BOX COVER - SMALL

Material : Steel (1.2mm thick)
Finish : Hot Dipped Galvanised

Item Code	Size (mm)	Pack Qty (pcs)
BN-C291	for 20 & 25	1,000

Material : Steel (0.75mm thick)
Finish : Pre-Galvanised

Item Code	Size (mm)	Pack Qty (pcs)
BN-C191	for 20 & 25	1,000



CIRCULAR BOX COVER - LARGE

Material : Steel (1.2mm thick)
Finish : Hot Dipped Galvanised

Item Code	Size (mm)	Pack Qty (pcs)
BN-C299	32	500

Material : Steel (0.75mm thick)
Finish : Pre-Galvanised

Item Code	Size (mm)	Pack Qty (pcs)
BN-C199	32	500



HOOK

Material : Steel
Finish : Hot Dipped Galvanised

Item Code	Size (mm)	Pack Qty (pcs)
BN-D148	for 20 & 25	300



RUBBER GASKETS

FOR CIRCULAR BOX - SMALL

Item Code	Size (mm)	Pack Qty (pcs)
BN-B191	for 20 & 25	2,500



FOR CIRCULAR BOX - LARGE

Item Code	Size (mm)	Pack Qty (pcs)
BN-B199	32	500



COUPLING

COUPLING

Material : Steel
Finish : Hot Dipped Galvanised

Item Code	Size (mm)	Pack Qty (pcs)
BN-C140	20	1,000
BN-C141	25	500
BN-C142	32	400



SHORT NIPPLE

Material : Steel
Finish : Hot Dipped Galvanised

Item Code	Size (mm)	Pack Qty (pcs)
BN-B2033S	20	1,000
BN-B2536S	25	750

Material : Brass

Item Code	Size (mm)	Pack Qty (pcs)
BN-B2033	20	1,000
BN-B2536	25	750



LONG NIPPLE - 300MM LONG

Material : Steel
Finish : Hot Dipped Galvanised

Item Code	Size (mm)	Pack Qty (pcs)
BN-BD20300	20	100
BN-BD25300	25	75
BN-BD32300	32	50



FLANGE COUPLING WITH LEAD WASHER & LONG MALE BUSH

Material : Malleable Iron (for Flange Coupling & Lead Washer)
 : Brass (Long Male Bush)
 Finish : Hot Dipped Galvanised (for Flange Coupling & Lead Washer)



Item Code	Size (mm)	Pack Qty (pcs)
BN-C220	20	200
BN-C225	25	200
BN-C232	32	100

BENDS

Material : Malleable Iron
 Finish : Hot Dipped Galvanised



INSPECTION ELBOW

Item Code	Size (mm)	Pack Qty (pcs)
BN-C121	20	100
BN-C221	25	100
BN-C321	32	50

INSPECTION BEND

Item Code	Size (mm)	Pack Qty (pcs)
BN-C122	20	100
BN-C222	25	100
BN-C322	32	50



INSPECTION TEE

Item Code	Size (mm)	Pack Qty (pcs)
BN-C123	20	100
BN-C223	25	100
BN-C323	32	50

90° NORMAL BEND, INTERNAL THREAD



Material : Steel
 Finish : Hot Dipped Galvanised

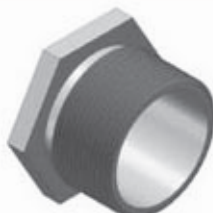
Item Code	Size (mm)	Pack Qty (pcs)
BN-C124	20	100
BN-C224	25	60
BN-C324	32	50

BUSHES

Material : Brass

MALE BUSH - SHORT

Item Code	Size (mm)	Pack Qty (pcs)
BN-BB120S	20	2,000
BN-BB125S	25	1,000
BN-BB132S	32	1,000



MALE BUSH - LONG

Item Code	Size (mm)	Pack Qty (pcs)
BN-BB120L	20	2,000
BN-BB125L	25	1,000
BN-BB132L	32	500

FEMALE BUSH

Item Code	Size (mm)	Pack Qty (pcs)
BN-B272	20	3,000
BN-B273	25	3,000
BN-B274	32	1,500

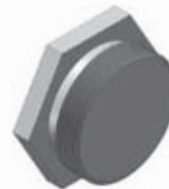


PLUGS

Material : Brass

STOPPING PLUG - HEXAGONAL HEAD

Item Code	Size (mm)	Pack Qty (pcs)
BN-BS120S	20	1,000
BN-BS125S	25	500
BN-BS132S	32	500



STOPPING PLUG - SLOTTED HEAD

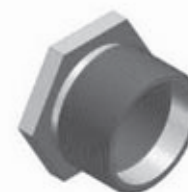
Item Code	Size (mm)	Pack Qty (pcs)
BN-BS120R	20	2,000
BN-BS125R	25	1,000
BN-BS132R	32	500



REDUCERS

REDUCER Material : Brass

Item Code	Size (mm)	Pack Qty (pcs)
BN-B401	20 x 25	1,000
BN-B402	32 x 25	300
BN-B403	20 x 32	500



LOCKNUT

HEXAGONAL LOCKNUT - LIGHT

Material : Steel
 Finish : Hot Dipped Galvanised

Item Code	Size (mm)	Pack Qty (pcs)
BN-L181S	20 x 3 (t)	3,000
BN-L182S	25 x 3 (t)	2,000
BN-L183S	32 x 3 (t)	1,500

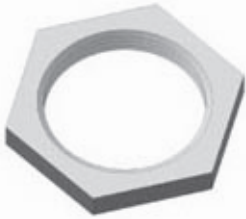
Finish : Electro-Galvanised

Item Code	Size (mm)	Pack Qty (pcs)
BN-L181EG	20 x 3 (t)	3,000
BN-L182EG	25 x 3 (t)	2,000
BN-L183EG	32 x 3 (t)	1,500



HEXAGONAL LOCKNUT - HEAVY

Material : Malleable Iron
Finish : Hot Dipped Galvanised



Item Code	Size (mm)	Pack Qty (pcs)
BN-L184S	20 x 6 (t)	2,000
BN-L185S	25 x 6 (t)	1,000
BN-L186S	32 x 6 (t)	1,000

Finish : Electro-Galvanised

Item Code	Size (mm)	Pack Qty (pcs)
BN-L184EG	20 x 6 (t)	2,000
BN-L185EG	25 x 6 (t)	1,000
BN-L186EG	32 x 6 (t)	1,000

HEXAGONAL LOCKNUT

Material : Brass

Item Code	Size (mm)	Pack Qty (pcs)
BN-BLN20	20	5,000
BN-BLN25	25	2,000
BN-BLN32	32	1,000



LOCKING RING

Material : Brass



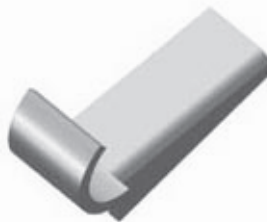
Item Code	Size (mm)	Pack Qty (pcs)
BN-BLR20	20	5,000
BN-BLR25	25	3,000
BN-BLR32	32	2,000

SADDLES

CRAMPET

Material : Steel
Finish : Hot Dipped Galvanised

Item Code	Size (mm)	Pack Qty (pcs)
BN-CTSR16	16	5,000
BN-CTSR20	20	4,000
BN-CTSR25	25	3,000
BN-CTSR32	32	2,000



HALF SADDLE

Material : Steel
Finish : Hot Dipped Galvanised



Item Code	Size (mm)	Pack Qty (pcs)
BN-SPH20HS	20	2,000
BN-SPH25HS	25	2,000
BN-SPH32HS	32	1,500

Material : Steel
Finish : Electro-Galvanised

Item Code	Size (mm)	Pack Qty (pcs)
BN-SPH20	20	2,000
BN-SPH25	25	2,000
BN-SPH32	32	1,500



PLAIN SADDLE

Material : Steel
Finish : Hot Dipped Galvanised

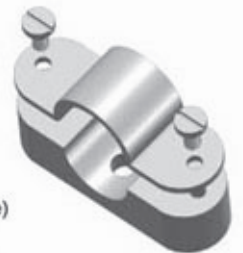
Item Code	Size (mm)	Pack Qty (pcs)
BN-SPO20HS	20	2,000
BN-SPO25HS	25	1,500
BN-SPO32HS	32	1,000

Material : Steel
Finish : Electro-Galvanised

Item Code	Size (mm)	Pack Qty (pcs)
BN-SPO20	20	2,000
BN-SPO25	25	1,500
BN-SPO32	32	1,000

DISTANCE SADDLE

Material : Malleable Iron (for base)
: Steel (for cover)
Finish : Hot Dipped Galvanised



Item Code	Size (mm)	Pack Qty (pcs)
BN-SP20	20	500
BN-SP25	25	300
BN-SP32	32	200



BAR SADDLE

Material : Steel
Finish : Hot Dipped Galvanised

Item Code	Size (mm)	Pack Qty (pcs)
BN-SPS20HS	20	1,000
BN-SPS25HS	25	1,000
BN-SPS32HS	32	500

Material : Steel
Finish : Electro-Galvanised

Item Code	Size (mm)	Pack Qty (pcs)
BN-SPS20	20	2,000
BN-SPS25	25	2,000
BN-SPS32	32	500

ADAPTOR



MALE ADAPTER WITH SCREW

Material : Brass

Item Code	Size (mm)	Pack Qty (pcs)
BN-BB16MS	16x20	1,000
BN-BB20MS	20x20	1,000
BN-BB25MS	25x25	400
BN-BB32MS	32x32	200
BN-BB38MS	38x1½"	160
BN-BB50MS	50x2"	80

FEMALE ADAPTOR WITH SCREW

Material : Brass

Item Code	Size (mm)	Pack Qty (pcs)
BN-BB16FS	16x20	1,000
BN-BB20FS	20x20	1,000
BN-BB25FS	25x25	400
BN-BB32FS	32x32	200
BN-BB38FS	38x1½"	160
BN-BB50FS	50x2"	80



MALE ADAPTOR WITHOUT SCREW

Material : Brass

Item Code	Size (mm)	Pack Qty (pcs)
BN-BB20M	20x20	1,000
BN-BB25M	25x25	400
BN-BB32M	32x32	200



FEMALE ADAPTOR WITHOUT SCREW

Material : Brass

Item Code	Size (mm)	Pack Qty (pcs)
BN-BB20F	20x20	1,000
BN-BB25F	25x25	400
BN-BB32F	32x32	200



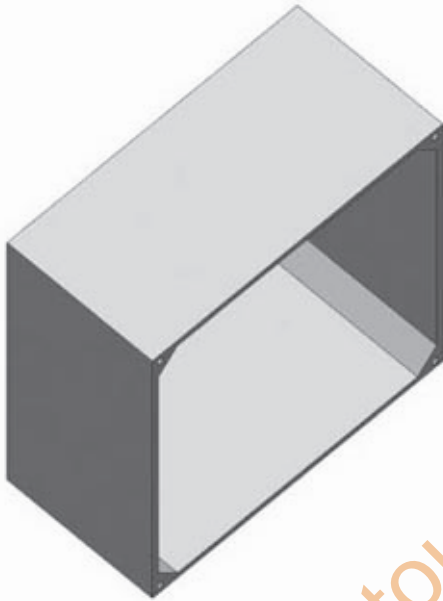
LUG



CABLE LUG

Material : Copper

Item Code	Size	Pack Qty (pcs)
BN-CSS003	2.5mm ²	25,000
BN-CSS004	4mm ²	20,000
BN-CSS006	6mm ²	8,000
BN-CSS010	10mm ²	5,000
BN-CSS016	16mm ²	5,000
BN-CSS025	25mm ²	2,500
BN-CSS035	35mm ²	2,000
BN-CSS050	50mm ²	1,500
BN-CSS070	70mm ²	900
BN-CSS095	95mm ²	600
BN-CSS120	120mm ²	400
BN-CSS150	150mm ²	300
BN-CSS185	185mm ²	250
BN-CSS240	240mm ²	200
BN-CSS300	300mm ²	80
BN-CSS400	400mm ²	85
BN-CSS500	500mm ²	50
BN-CSS630	630mm ²	20



ADAPTABLE BOXES

ADAPTABLE BOX WITH SCREW & COVER

Material : Cast Iron
 Finish : Hot Dipped Galvanised

Item Code	Size (mm)	Pack Qty (pcs)
BN-A152	75 x 75 x 50	50
BN-A153	100 x 100 x 50	40
BN-A475	100 x 100 x 75	20
BN-A154	150 x 150 x 75	10
BN-A155	225 x 225 x 75	5
BN-A156	300 x 300 x 75	5

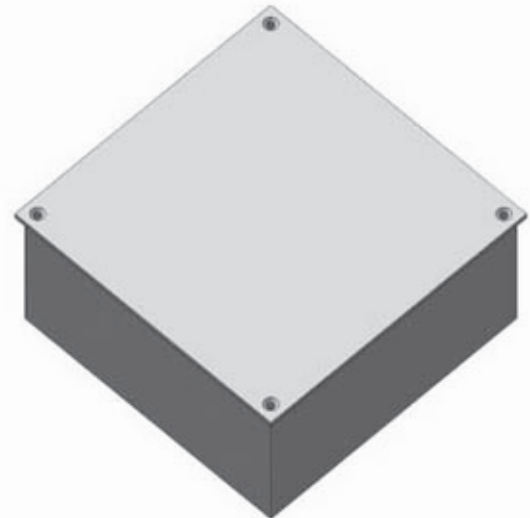
ADAPTABLE BOX WITH SCREW & COVER

Material : Cast Iron (for adaptable box)
 Steel (for cover)
 Finish : Hot Dipped Galvanised

Item Code	Size (mm)	Pack Qty (sets)
BN-S152H	75 x 75 x 50	50
BN-S153H	100 x 100 x 50	40
BN-S475H	100 x 100 x 75	20
BN-S154H	150 x 150 x 75	10
BN-S155H	225 x 225 x 75	5
BN-S156H	300 x 300 x 75	5

Material : Steel
 Finish : Hot Dipped Galvanised

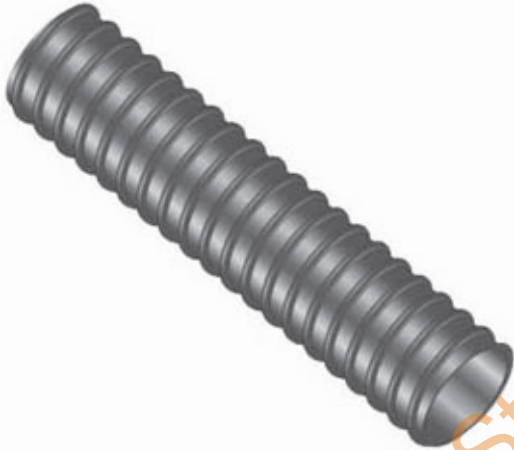
Item Code	Size (mm)	Pack Qty (sets)
BN-KB075-37-HC	75 x 75 x 37.5	100
BN-KB075-50-HC	75 x 75 x 50	100
BN-KB100-37-HC	100 x 100 x 37.5	100
BN-KB100-50-HC	100 x 100 x 50	80
BN-KB100-75-HC	100 x 100 x 75	60
BN-KB150-75-HC	150 x 150 x 75	40
BN-KB150-100-HC	150 x 150 x 100	30
BN-KB225-100-HC	225 x 225 x 100	20



Material : Steel
 Finish : Pre-Galvanised

Item Code	Size (mm)	Pack Qty (sets)
BN-KB075-37-SC	75 x 75 x 37.5	100
BN-KB075-50-SC	75 x 75 x 50	100
BN-KB100-37-SC	100 x 100 x 37.5	100
BN-KB100-50-SC	100 x 100 x 50	80
BN-KB100-75-SC	100 x 100 x 75	60
BN-KB150-75-SC	150 x 150 x 75	40
BN-KB150-100-SC	150 x 150 x 100	30
BN-KB225-100-SC	225 x 225 x 100	20

FLEXIBLE CONDUITS



FLEXIBLE CONDUIT WITH BLACK PVC

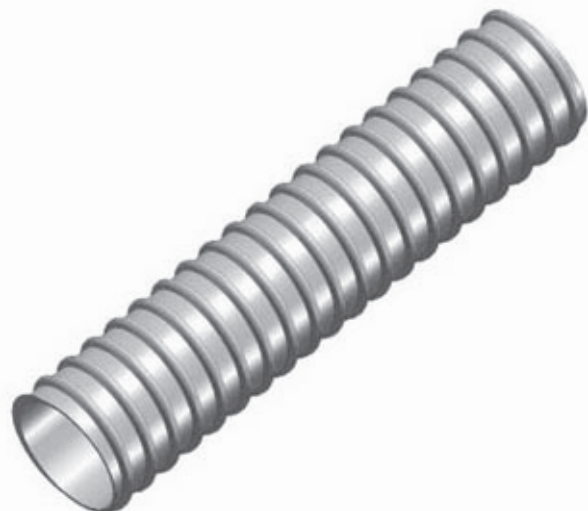
Material : Steel (for Flexible Conduit)
 : PVC (for Sheath)
 Finish : Electro-Galvanised
 (for Flexible Conduit)

Item Code	Size (mm)	Pack Qty (metres)
BN-KSPS20	20	30
BN-KSPS25	25	30
BN-KSPS32	32	25

FLEXIBLE CONDUIT WITHOUT BLACK PVC

Material : Steel
 Finish : Electro-Galvanised

Item Code	Size (mm)	Pack Qty (metres)
BN-KSM20	20	30
BN-KSM25	25	30
BN-KSM32	32	25

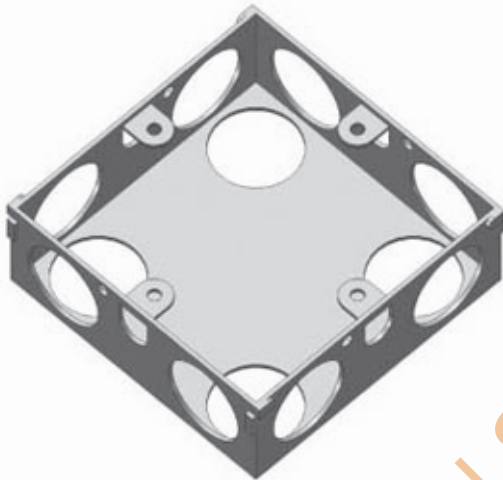


SWITCH & SOCKET BOXES

ONE GANG

Material : Steel Plate

Finish : Pre-Galvanised



Item Code	Size (mm) (l x w x h x t)	K/O's
BN-P12510	70 x 70 x 25 x 1.0	12 x 20mm
BN-P13508	70 x 70 x 35 x 0.8	7 x 20mm, 4 x 25mm
BN-P13509	70 x 70 x 35 x 0.9	7 x 20mm, 4 x 25mm
BN-P13510	70 x 70 x 35 x 1.0	7 x 20mm, 4 x 25mm
BN-P13511	70 x 70 x 35 x 1.1	7 x 20mm, 4 x 25mm
BN-P13512	70 x 70 x 35 x 1.2	7 x 20mm, 4 x 25mm
BN-P14708	70 x 70 x 47 x 0.8	9 x 20mm, 1 x 25mm
BN-P14709	70 x 70 x 47 x 0.9	9 x 20mm, 1 x 25mm
BN-P14710	70 x 70 x 47 x 1.0	9 x 20mm, 1 x 25mm
BN-P14711	70 x 70 x 47 x 1.1	9 x 20mm, 1 x 25mm
BN-P14712	70 x 70 x 47 x 1.2	9 x 20mm, 1 x 25mm

* All above come with one brass earth terminal, one adjustable and three fixed lug

TWO GANG

Material : Steel Plate

Finish : Pre-Galvanised

Item Code	Size (mm) (l x w x h x t)	K/O's
BN-P22510	130 x 70 x 25 x 1.0	16 x 20mm
BN-P23508	130 x 70 x 35 x 0.8	13 x 20mm, 3 x 25mm
BN-P23509	130 x 70 x 35 x 0.9	13 x 20mm, 3 x 25mm
BN-P23510	130 x 70 x 35 x 1.0	13 x 20mm, 3 x 25mm
BN-P23511	130 x 70 x 35 x 1.1	13 x 20mm, 3 x 25mm
BN-P23512	130 x 70 x 35 x 1.2	13 x 20mm, 3 x 25mm
BN-P24708	130 x 70 x 47 x 0.8	10 x 20mm, 6 x 25mm
BN-P24709	130 x 70 x 47 x 0.9	10 x 20mm, 6 x 25mm
BN-P24710	130 x 70 x 47 x 1.0	10 x 20mm, 6 x 25mm
BN-P24711	130 x 70 x 47 x 1.1	10 x 20mm, 6 x 25mm
BN-P24712	130 x 70 x 47 x 1.2	10 x 20mm, 6 x 25mm



* All above come with one brass earth terminal, one adjustable and one fixed lug



BURN[®]
Conduit & Fittings



ROYAL STEEL INDUSTRY CO., LTD.

1/115 Moo. 2, T. Tasai, A. Muang, Samutsakorn 74000 Thailand

Tel : +66 (34) 490100-2 Fax : +66 (34) 490103

E-mail : info@royalsteel.co.th

www.royalsteel.co.th

